

InTouch

InTouch is an interactive communication tool for internal employees, this application serves with company directory, Employee information, emergency contacts. And lot more.

Overview

The Challenge:

Create a social media experience for employees.

Approach:

Through the design thinking approach, I sought to understand the needs of the user and balance those with the company's Objectives and Technological capabilities.

Outcome:

A intra-net social media app which enhances the user experience and improves the communication between employees.

Length of project:

1 Month

Role:

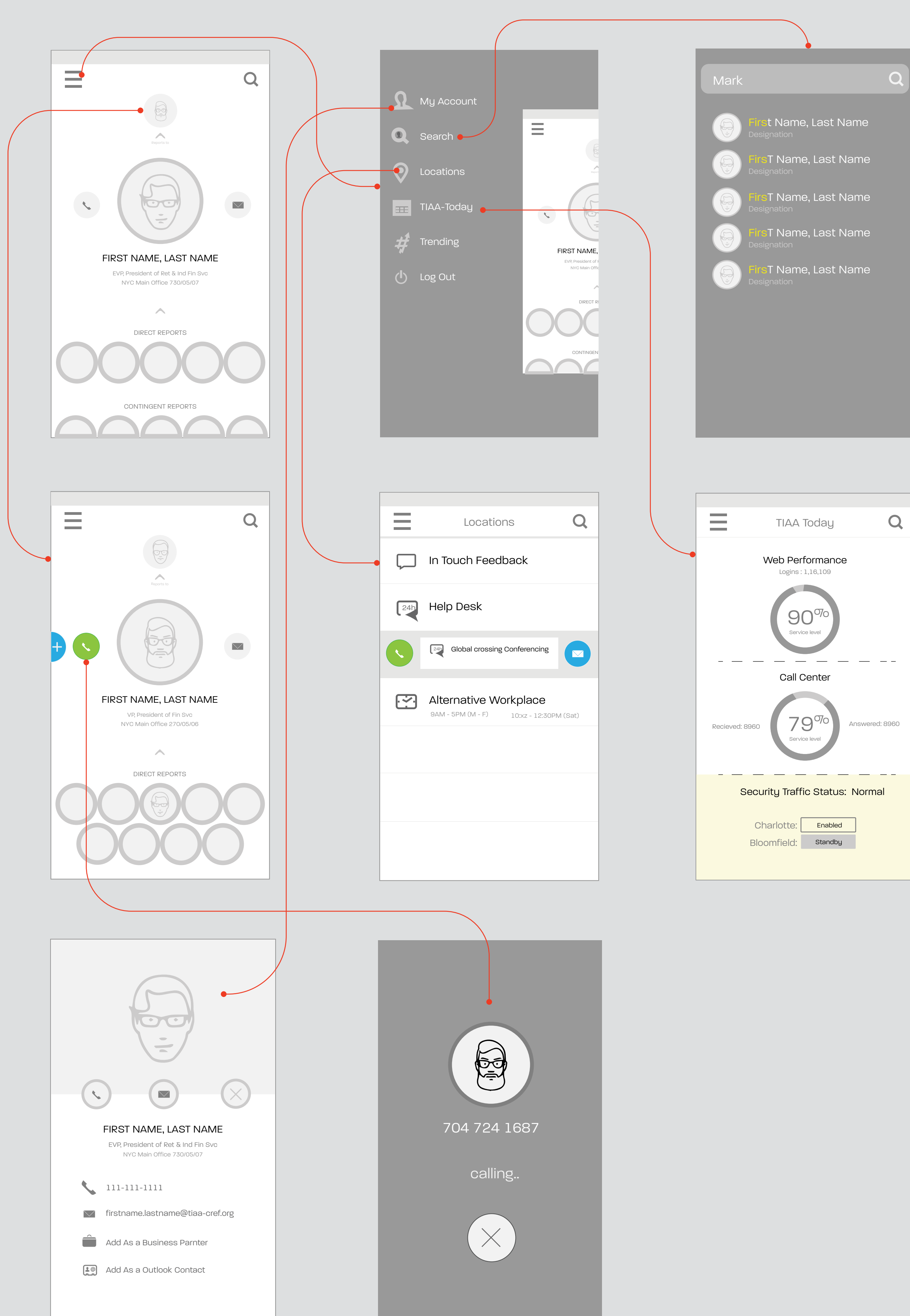
UX designer (Interaction design, Visual Design)

Define & Ideate

Brainstorm:

I gathered 3 of our employees from different groups (security person, Business & development groups) to participate ideation sessions. I interviewed them with how they are using social media applications. And i asked each participant to come up with as many ideas as possible with in a time-frame.

High Fidelity Wire-frames



Final Designs

